

The
Team MOBIL
for the child
is

a free additional service for all families whose children attend a kindergarten run by the City of Innsbruck.

What do we do?

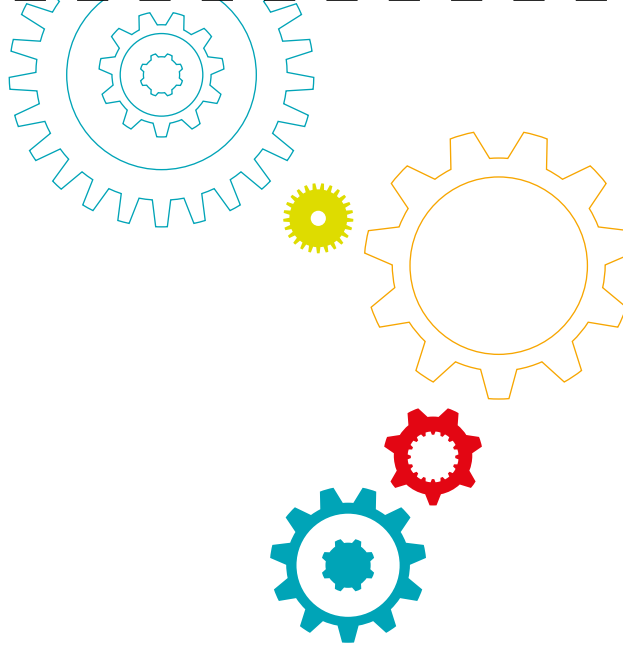
- We work with children who need support and guidance in their individual development.
- We are the contact point for educational issues and complaints.
- We work together with network partners and support families through networking.

Depending on the subject area, our municipal team can be contacted at short notice and is also available on site.

Coordination: Ida Pfeifhofer

Email: post.team.mobil@innsbruck.gv.at or ida.pfeifhofer@innsbruck.gv.at

Phone: 0512-5360-4212



**INNS'
BRUCK**

Team MOBIL
for the child

a free support programme for families whose children attend a kindergarten run by the City of Innsbruck.



Innsbruck State Capital

Maria-Theresien-Strasse 18, 6020 Innsbruck, www.innsbruck.gv.at
Publication details: MA V - Office for Children, Youth & Generations
Head of department: Deputy Mayor Mag.^a Elisabeth Mayr

German

English

SKB

Turkish

Arabic

Team MOBIL for the child



Kindergarten social work section – KiSo

Support for parents and guardians in case of

- questions about offerings that families can take up
- accompaniment to institutions (e.g. school enrolment) and with regard to cooperation with network partners
- counselling on family issues

Consultations are offered on site at the kindergarten

Start: expected in autumn 2025

Development and inclusion

Targeted support for children in kindergartens in case of

- development issues
- special needs
- allergies/intolerances

Contact is made directly through the respective kindergarten management

Contact and counselling

Contact point for parents and guardians in case of

- questions about parenting
- questions about the organisation and offerings of the kindergartens
- complaints and concerns

Consultations are offered on site at the kindergarten

Contact:

Birgit Haller-Glettler, BA

Email: post.team.mobil@innsbruck.gv.at

Phone: 0512-5360-4253